

CLONMACNOISE SUITE

ROOM CAPACITIES

| | |
|------------|-----|
| THEATRE | 650 |
| CLASSROOM | 300 |
| BOARDROOM | 60 |
| U-SHAPE | 60 |
| BANQUETING | 400 |
| CABARET | 300 |

ROOM DIMENSIONS

| | |
|---------|-------|
| LENGTH: | 23.8m |
| WIDTH: | 23.8m |

HODSON BAY HOTEL

+353 (0)9064 42000
hodsonbayhotel.com
info@hodsonbayhotel.com

EISCIR RIADA SUITE

FULL ROOM DIMENSIONS

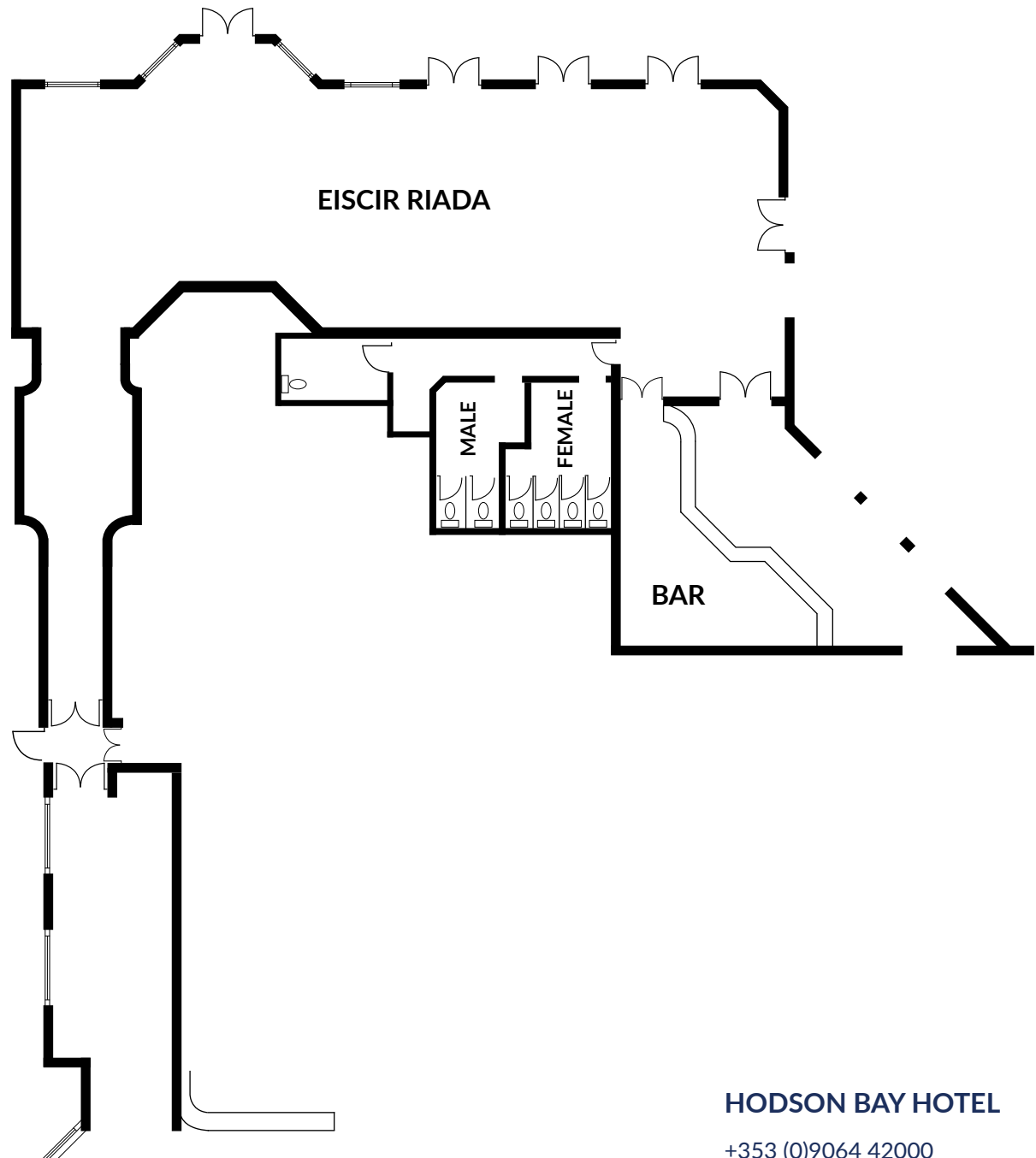
LENGTH: 25.3m

WIDTH: 7.3m

CORRIDOR DIMENSIONS

LENGTH: 7m

WIDTH: 2.9m

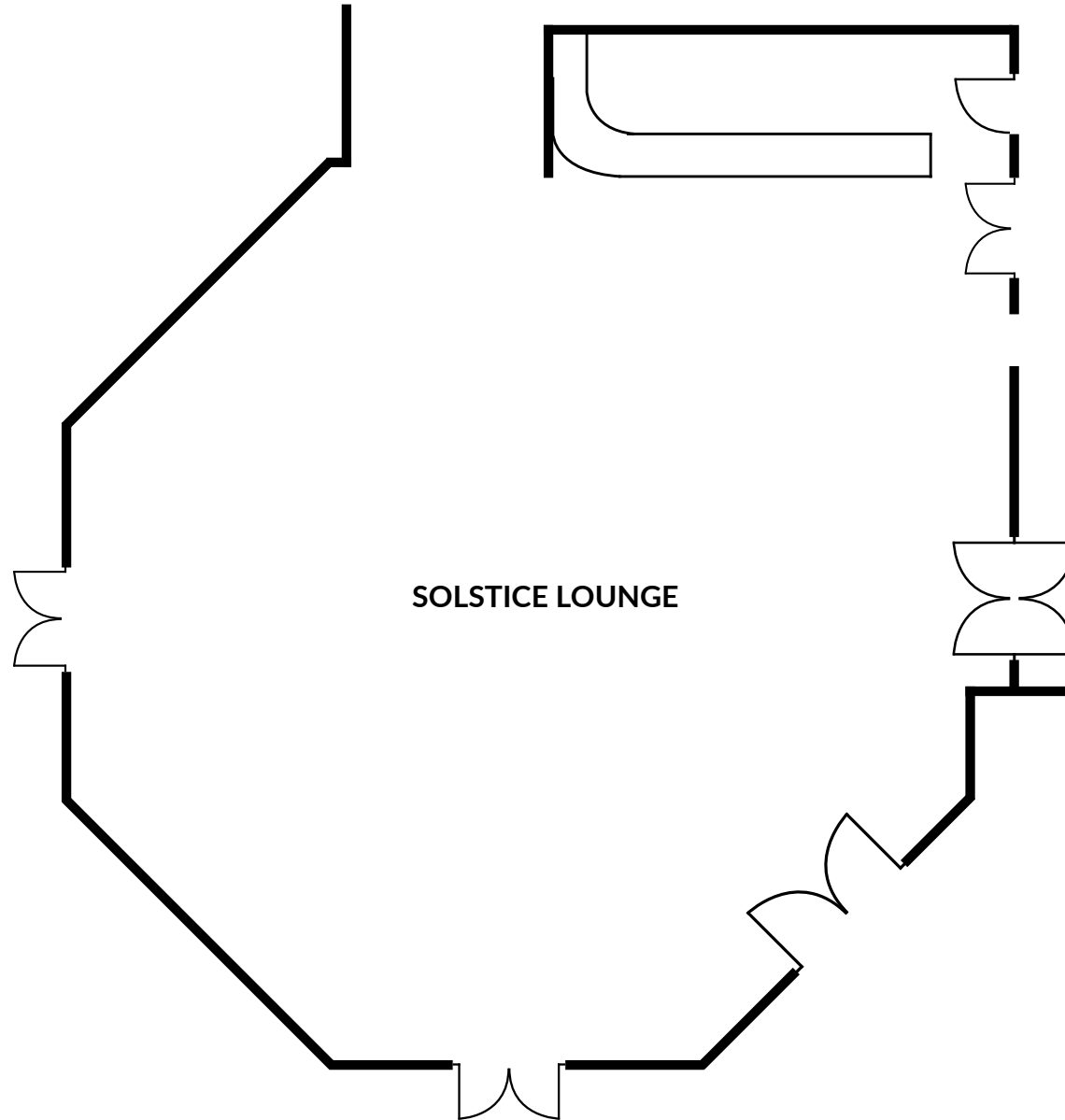


HODSON BAY HOTEL

+353 (0)9064 42000

hodsonbayhotel.com

info@hodsonbayhotel.com



SOLSTICE LOUNGE

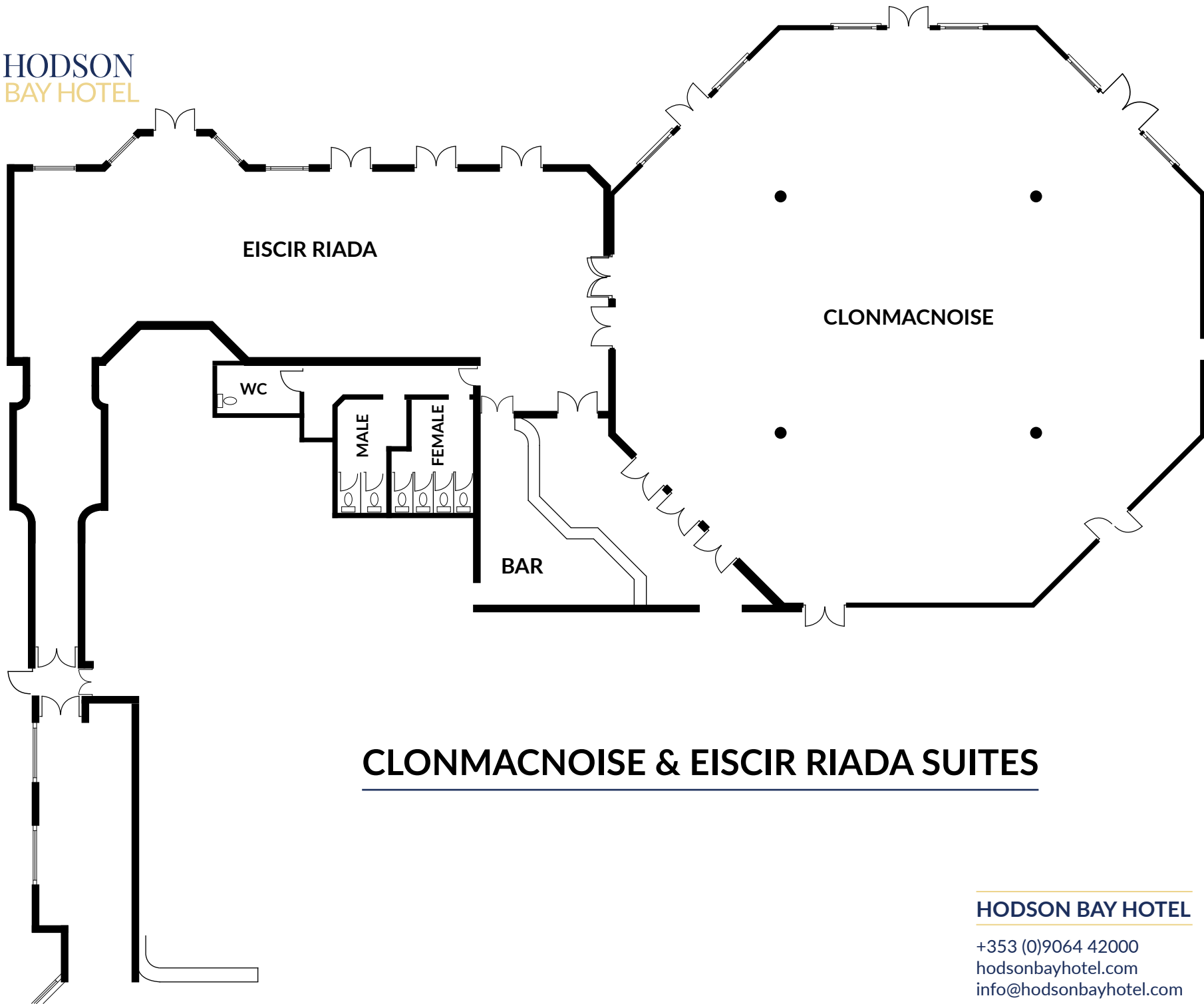
ROOM DIMENSIONS

LENGTH: 11.8m

WIDTH: 11.8m

HODSON BAY HOTEL

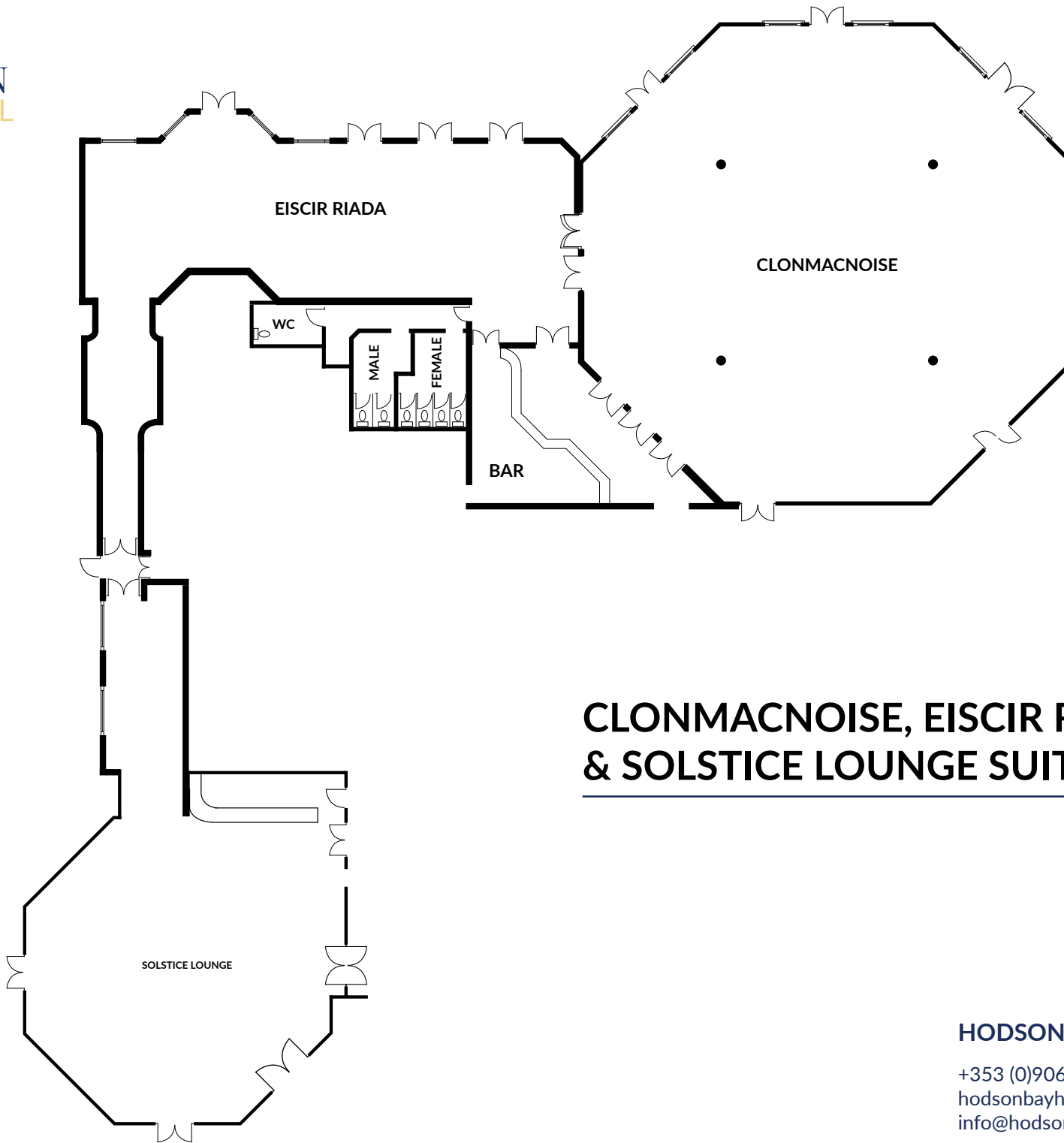
+353 (0)9064 42000
hodsonbayhotel.com
info@hodsonbayhotel.com



CLONMACNOISE & EISCIR RIADA SUITES

HODSON BAY HOTEL

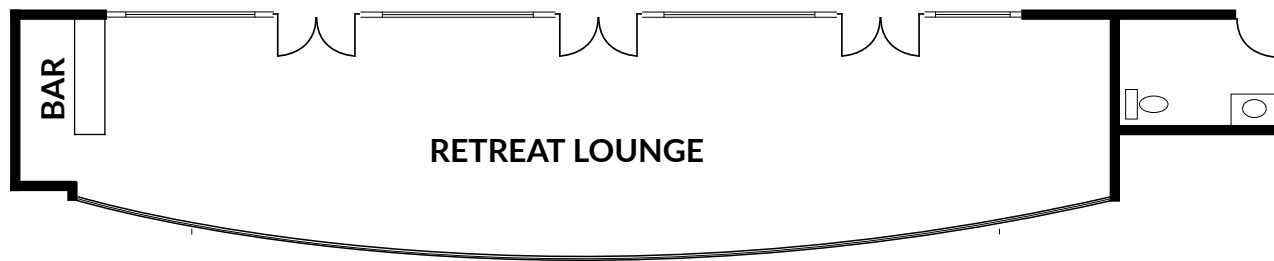
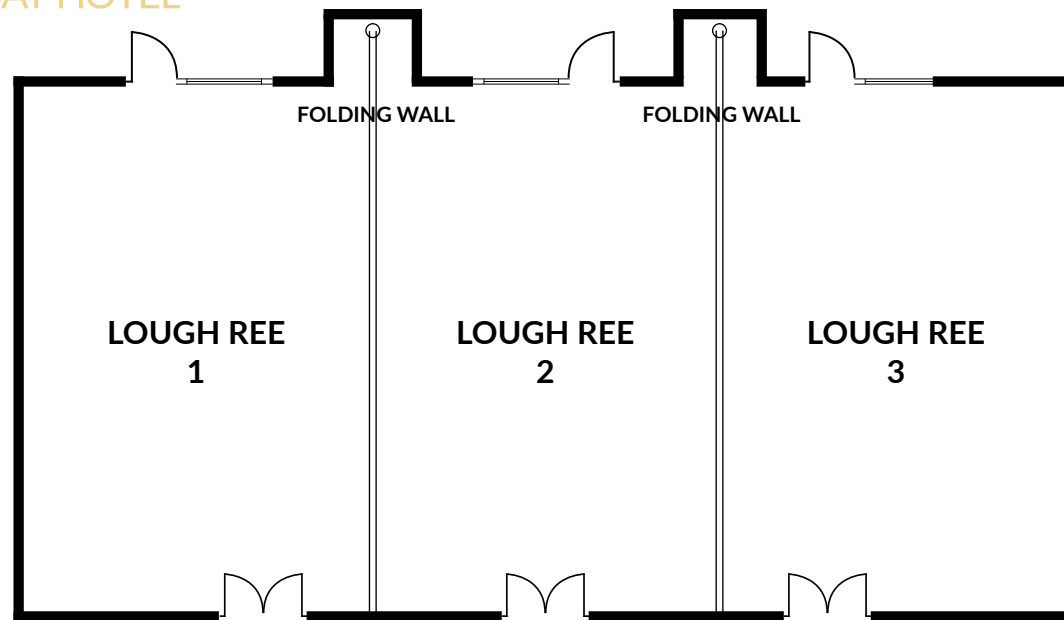
+353 (0)9064 42000
hodsonbayhotel.com
info@hodsonbayhotel.com



CLONMACNOISE, EISCIR RIADA & SOLSTICE LOUNGE SUITES

HODSON BAY HOTEL

+353 (0)9064 42000
hodsonbayhotel.com
info@hodsonbayhotel.com



RETREAT LOUNGE

DIRECTLY ADJACENT TO THE LOUGH REE SUITE, THE RETREAT LOUNGE IS THE PERFECT AREA FOR PRE-CONFERENCE REGISTRATION, REFRESHMENT BREAKS OR EXHIBITION STANDS. WITH DIRECT ACCESS TO OUTDOORS THIS IS A LOVELY BRIGHT AREA WITH FLOOR TO CEILING WINDOWS.

ROOM DIMENSIONS

LENGTH: 4.3m WIDTH: 20.3m

LOUGH REE SUITE

FULL ROOM CAPACITIES

| | |
|-----------|-----|
| THEATRE | 200 |
| CLASSROOM | 120 |
| BOARDROOM | 80 |
| U-SHAPE | 30 |
| CABARET | 120 |

FULL ROOM DIMENSIONS

LENGTH: 20.1m

WIDTH: 10.0m

SINGLE ROOM CAPACITIES

| | |
|-----------|----|
| THEATRE | 60 |
| CLASSROOM | 40 |
| BOARDROOM | 26 |
| U-SHAPE | 28 |
| CABARET | 30 |

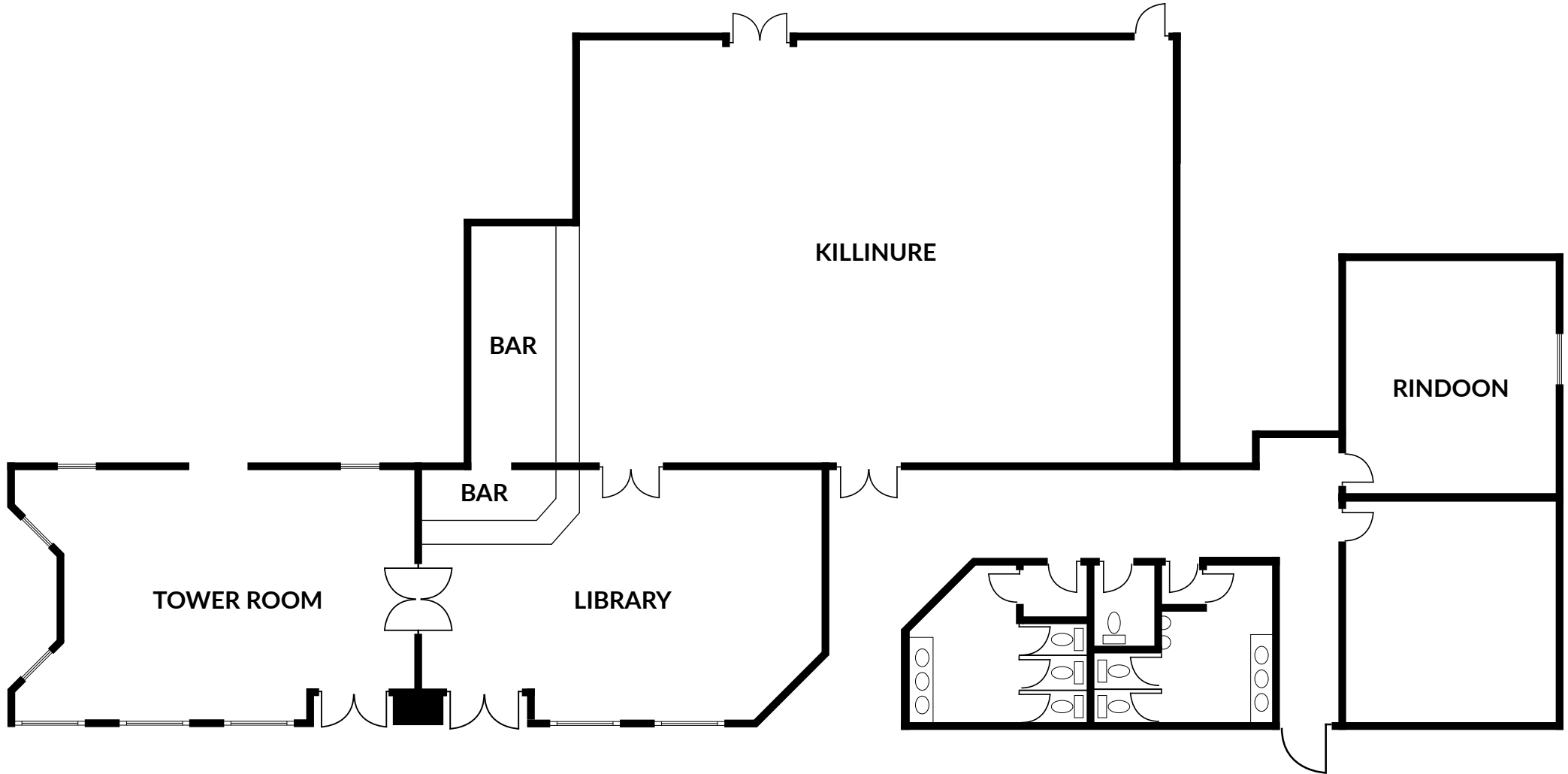
SINGLE ROOM DIMENSIONS

LENGTH: 6.7m

WIDTH: 10.0m

HODSON BAY HOTEL

+353 (0)9064 42000
hodsonbayhotel.com
info@hodsonbayhotel.com

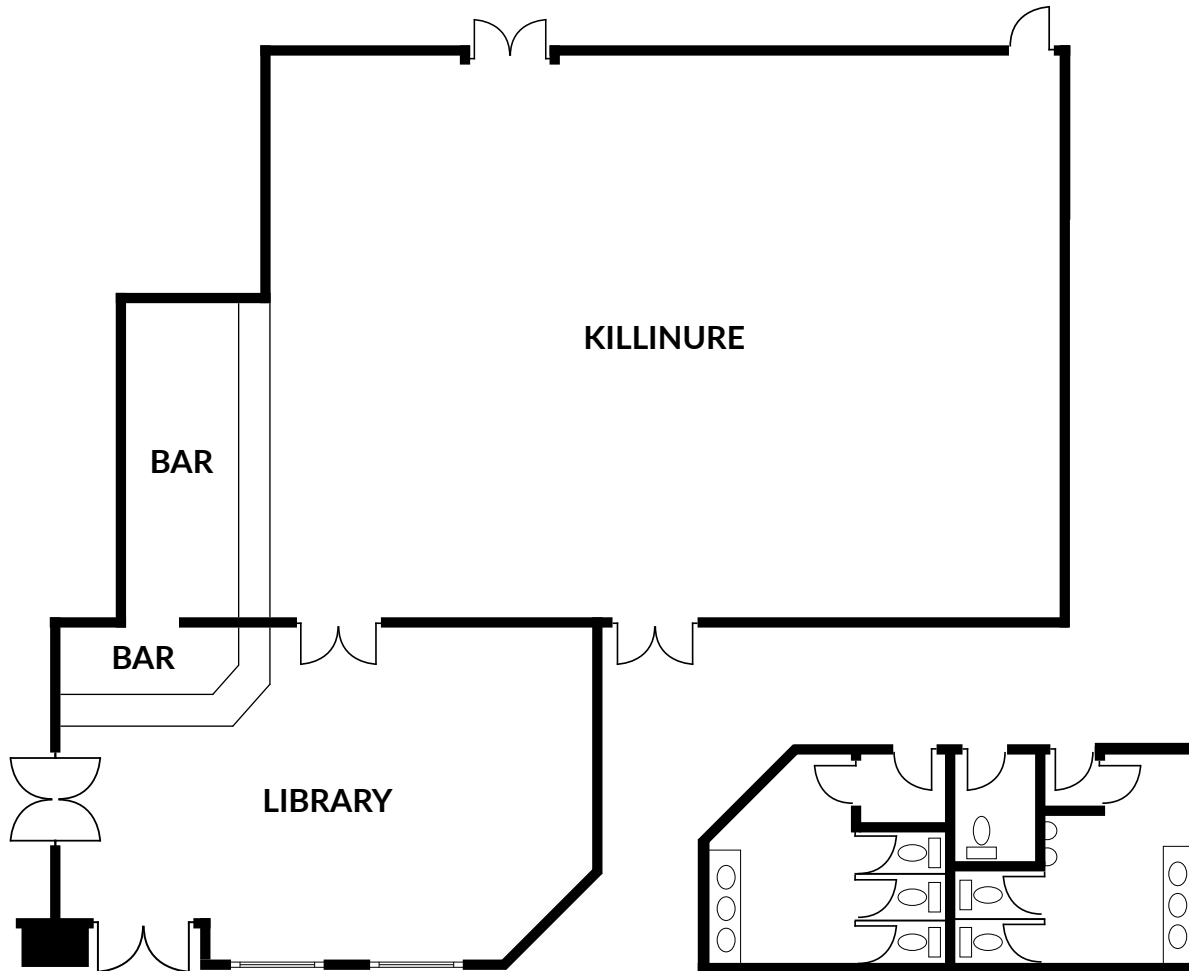


HODSON BAY HOTEL

+353 (0)9064 42000

hodsonbayhotel.com

info@hodsonbayhotel.com



KILLINURE SUITE

ROOM CAPACITIES

| | |
|------------|-----|
| THEATRE | 200 |
| CLASSROOM | 100 |
| BOARDROOM | 45 |
| U-SHAPE | 45 |
| BANQUETING | 100 |
| CABARET | 100 |

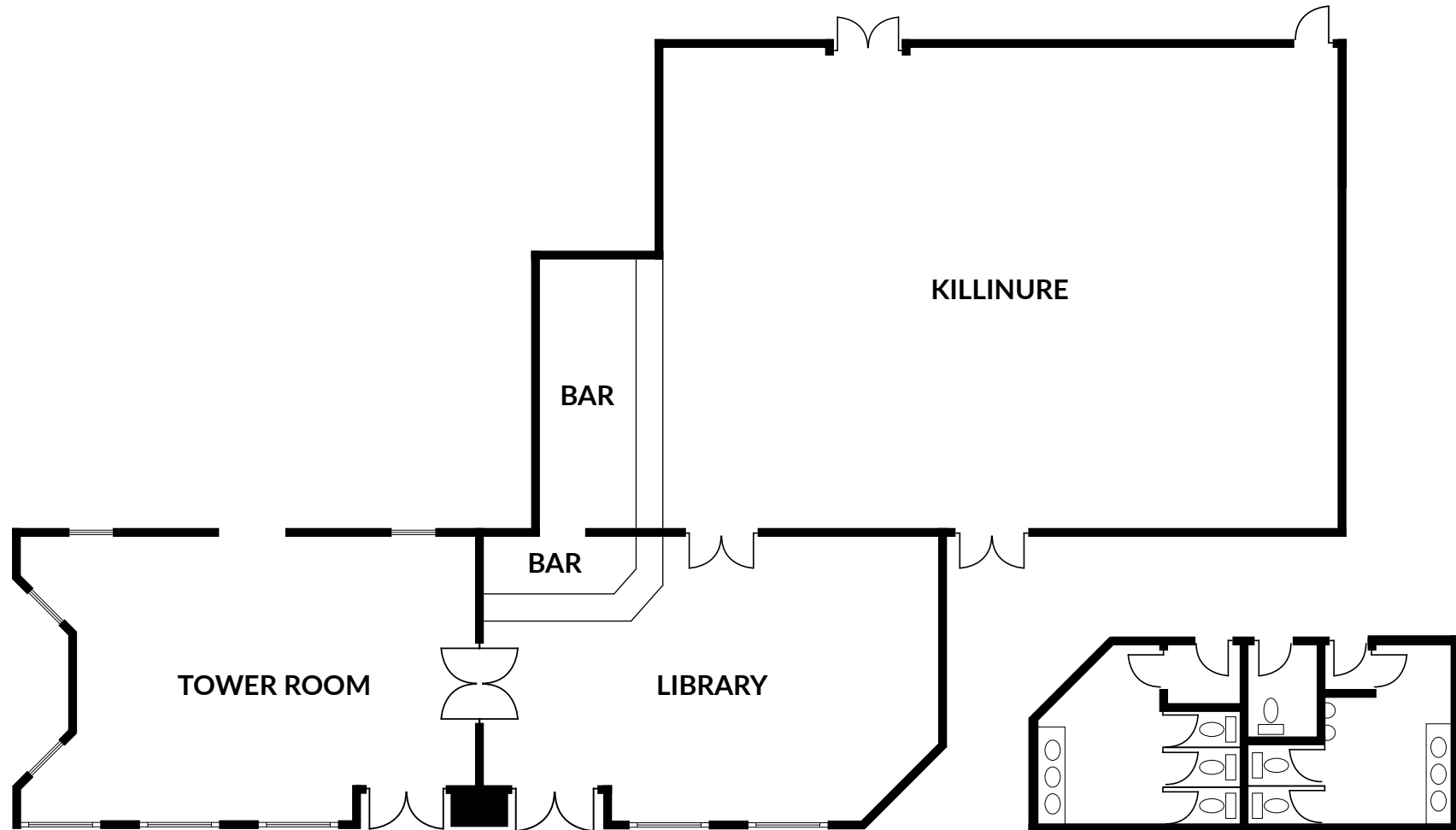
ROOM DIMENSIONS

| | |
|---------|--------|
| LENGTH: | 15.24m |
| WIDTH: | 10.97m |

HODSON BAY HOTEL

+353 (0)9064 42000
hodsonbayhotel.com
info@hodsonbayhotel.com

PRIVATE DINING SPACES

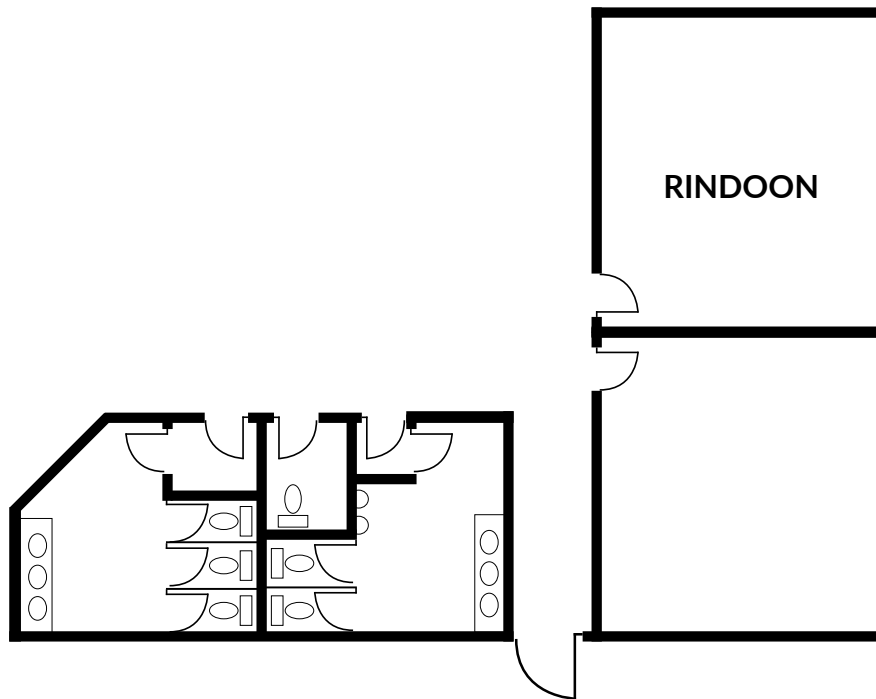


ROOM CAPACITIES

| | |
|-----------|-----|
| KILLINURE | 100 |
| TOWER | 40 |
| LIBRARY | 30 |

HODSON BAY HOTEL

+353 (0)9064 42000
hodsonbayhotel.com
info@hodsonbayhotel.com



RINDOON SUITE

ROOM CAPACITIES

| | |
|-----------|----|
| THEATRE | 20 |
| BOARDROOM | 10 |
| U-SHAPE | 13 |

ROOM DIMENSIONS

| | |
|---------|-------|
| LENGTH: | 5.33m |
| WIDTH: | 5.79m |

HODSON BAY HOTEL

+353 (0)9064 42000
hodsonbayhotel.com
info@hodsonbayhotel.com

LECARROW SUITE

FULL ROOM CAPACITIES

| | |
|-----------|-----|
| THEATRE | 180 |
| CLASSROOM | 110 |
| BOARDROOM | 50 |
| U-SHAPE | 44 |
| CABARET | 90 |

FULL ROOM DIMENSIONS

| | |
|---------|-------|
| LENGTH: | 20.5m |
| WIDTH: | 10.0m |

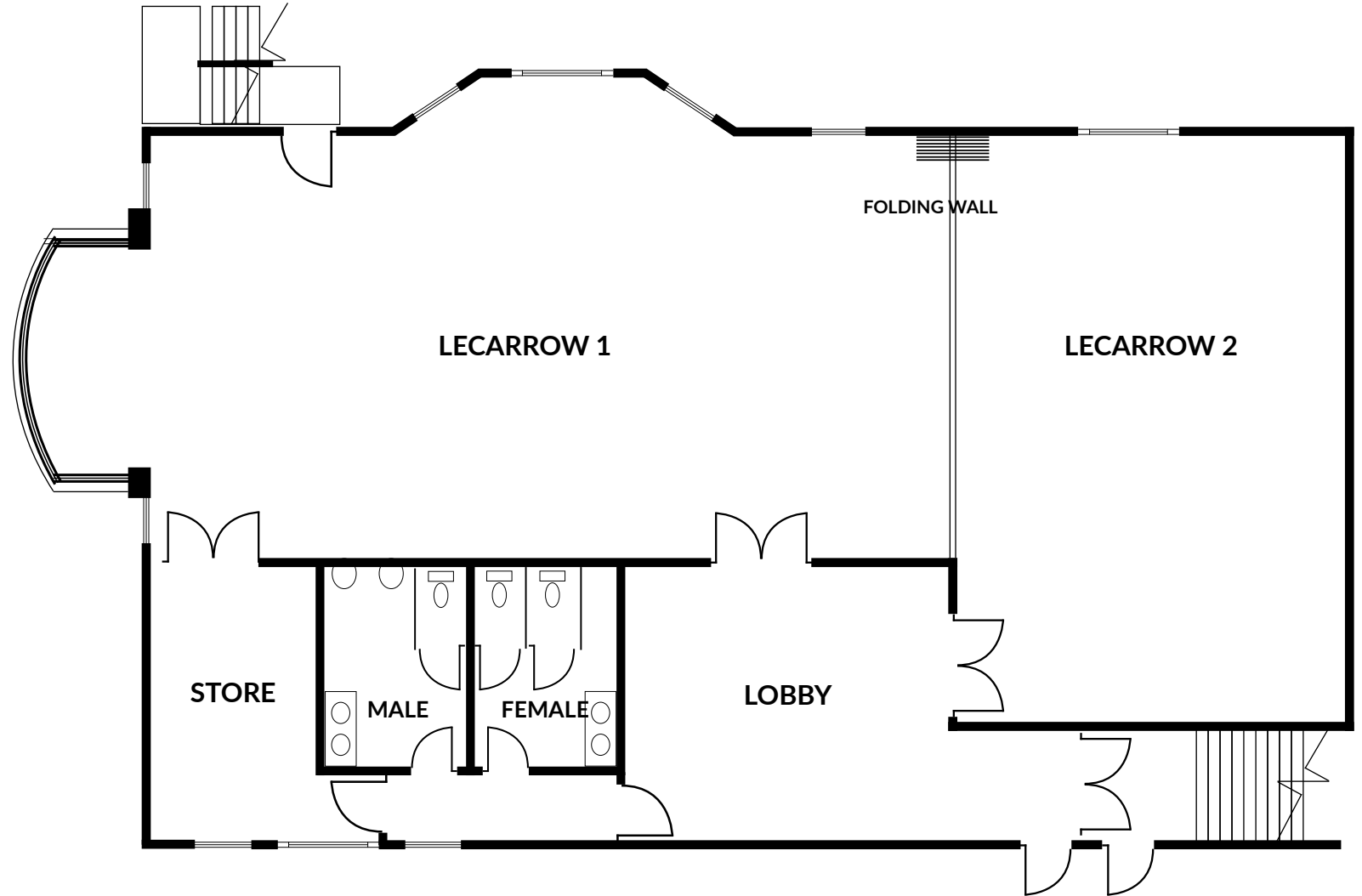
SINGLE ROOM CAPACITIES

LECARROW 1

| | |
|-----------|-----|
| THEATRE | 120 |
| CLASSROOM | 80 |
| BOARDROOM | 40 |
| U-SHAPE | 30 |
| CABARET | 60 |

LECARROW 2

| | |
|-----------|----|
| THEATRE | 60 |
| CLASSROOM | 30 |
| BOARDROOM | 24 |
| U-SHAPE | 30 |
| CABARET | 30 |



SINGLE ROOM DIMENSIONS

LECARROW 1

| | | | |
|---------|-------|--------|------|
| LENGTH: | 13.7m | WIDTH: | 7.9m |
|---------|-------|--------|------|

LECARROW 2

| | | | |
|---------|------|--------|-------|
| LENGTH: | 6.8m | WIDTH: | 10.0m |
|---------|------|--------|-------|

HODSON BAY HOTEL

+353 (0)9064 42000
hodsonbayhotel.com
info@hodsonbayhotel.com

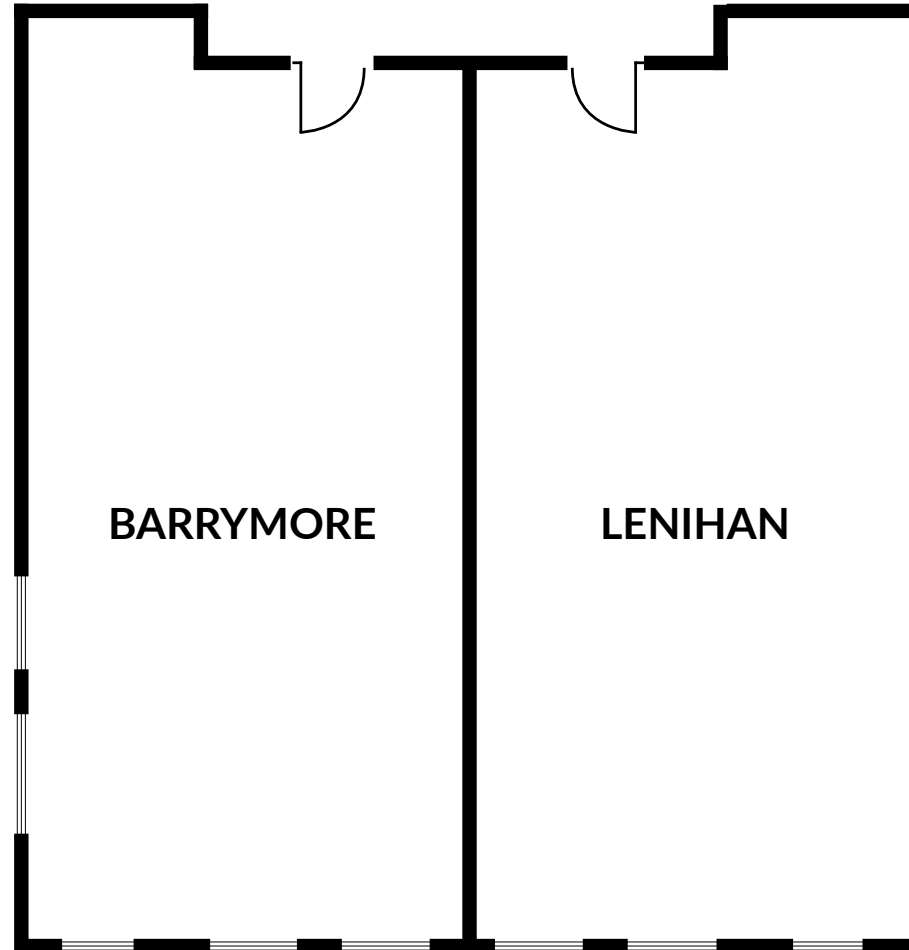
BARRYMORE SUITE

ROOM CAPACITIES

| | |
|-----------|----|
| THEATRE | 40 |
| CLASSROOM | 20 |
| BOARDROOM | 20 |

ROOM DIMENSIONS

| | |
|---------|-------|
| LENGTH: | 9.45m |
| WIDTH: | 4.57m |



LENIHAN SUITE

ROOM CAPACITIES

| | |
|-----------|----|
| THEATRE | 40 |
| CLASSROOM | 20 |
| BOARDROOM | 20 |

ROOM DIMENSIONS

| | |
|---------|-------|
| LENGTH: | 9.45m |
| WIDTH: | 4.57m |

HODSON BAY HOTEL

+353 (0)9064 42000
hodsonbayhotel.com
info@hodsonbayhotel.com